

5005 Poppy at The Cottages at the Park Phase 3 for TC-139 POPPY SPEC

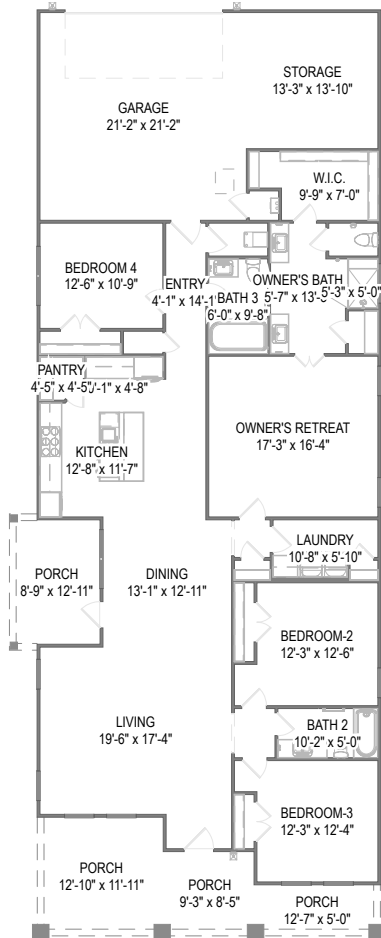
Customized on November 26, 2025 at 12:40 PM

6810 Winterwood Ave.

SQFT 2,262 |  4 |  3 |  2

Model: **5005 Poppy at ...**
Elevation: **Elevation D**
Lot: **139 (Phase 3)**

Your 5005 Poppy at The Cottages at the Park Phase 3 for TC-139 POPPY SPEC home includes a Garage Storage, Elevation D, Single Oven with Cooktop and 6 other options.

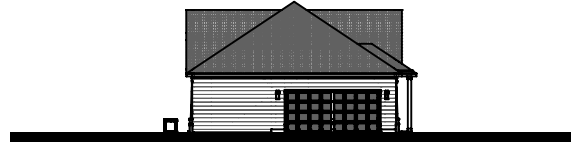


First Floor

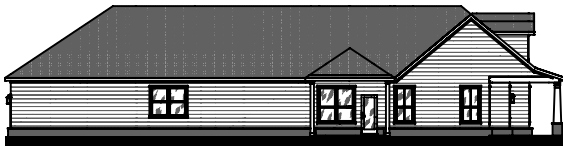
Prices, plans, specifications, square footage, and availability are subject to change without notice or prior obligation. In the instance an option is unavailable or discontinued we have the right to replace the option with another option that is comparable in look, quantity, and price without notice or prior obligation. Square footage is approximate and may vary upon elevation and/or options selected. Selection made at the Sales Appointment that change the square footage or footprint of the home are final and cannot be changed after the conclusion of the appointment. Selections made at the second Design Appointment are final and cannot be changed after the conclusion of the appointment.



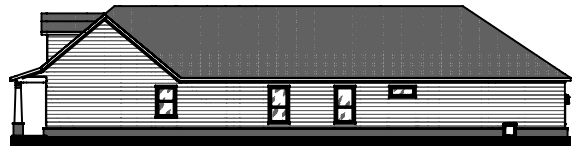
Front Elevation



Rear Elevation



Side Elevation



Side Elevation

Prices, plans, specifications, square footage, and availability are subject to change without notice or prior obligation. In the instance an option is unavailable or discontinued we have the right to replace the option with another option that is comparable in look, quantity, and price without notice or prior obligation. Square footage is approximate and may vary upon elevation and/or options selected. Selection made at the Sales Appointment that change the square footage or footprint of the home are final and cannot be changed after the conclusion of the appointment. Selections made at the second Design Appointment are final and cannot be changed after the conclusion of the appointment.

